

High impact tank cleaning machine

MeshClean

Series 5T2/5T3



Features:

- High efficiency thanks to especially powerful solid jet nozzles
- Also suitable for smaller tanks with persistent soiling
- Active self-cleaning through special nozzle geometry
- Particularly low-maintenance



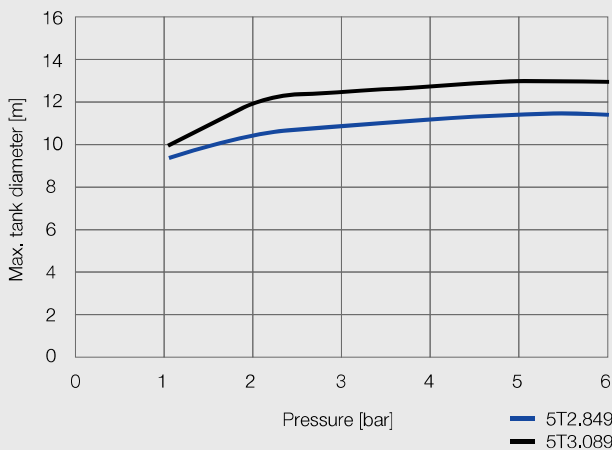
Function video
www.lechler.com/de-en/medialibrary/videos-general-industry
 Or scan the QR code.

Series 5T2/5T3

Technical data:

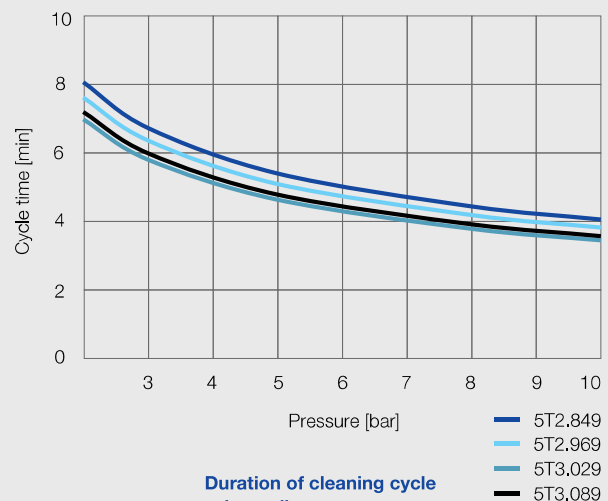
Maximum operating temperature 150 °C 150 °C (ATEX)	Maximum ambient temperature 150 °C 150 °C (ATEX)	Installation Operation in every installation position	Bearing Ball bearing
Material Stainless steel 1.4404 (316L), PTFE, PEEK, EPDM or FKM	Weight 1.0 kg	Surface quality Ra ≤ 0,8 µm <small>OUTSIDE</small>	Surface quality Ra ≤ 1,6 µm <small>INSIDE</small>
Steam suitability Suitable	Insertion diameter 68–82 mm	Recommended filter Line strainer with a mesh size of 0.2 mm/80 mesh	Recommended operating pressure 5 bar
Adapter 3/4 BSP is compatible with HygienicFit	Rotation monitoring Sensor-compatible, information: see pages 100–101	Maintainable	

Max. tank diameter
 The specified maximum tank diameter applies to the recommended operating pressure and is indicative only. The type of soiling is also decisive for the cleaning result.



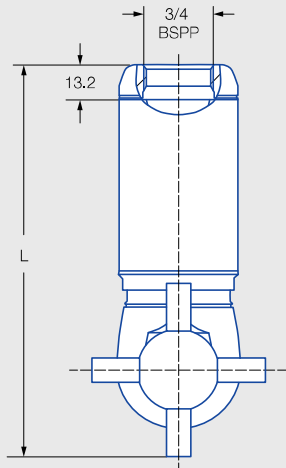
Overview of maximum tank diameter depending on pressure

Duration of cleaning cycle

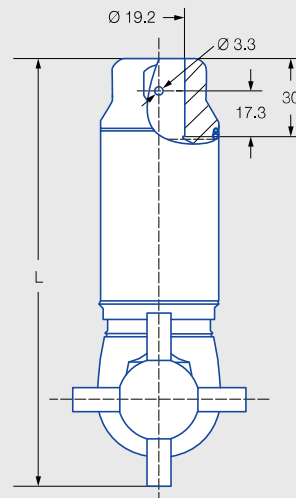


Duration of cleaning cycle depending on pressure

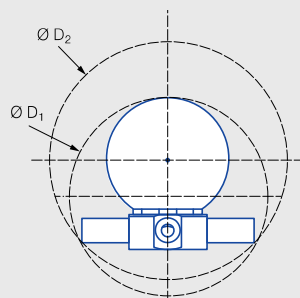
Dimensions in mm.



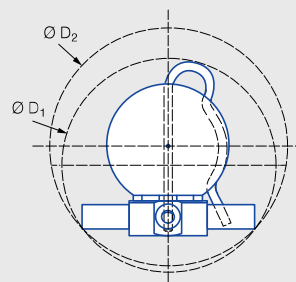
Female thread



Dimensions of slip-on connection according to ASME-BPE (OD tube)



Insertion diameter D_1 and interference circle diameter D_2 of the threaded connection



Insertion diameter D_1 and interference circle diameter D_2 of the slip-on connection

Spray angle	Ordering no.					Narrowest cross-section \varnothing [mm]	Quantity x \varnothing nozzle [mm]	\dot{V} water [l/min]				\dot{V} water	Dimensions [mm]						Max. tank diameter [m]
	Type	Connection		3/4" slip-on connection				p [bar] ($p_{max} = 15$ bar)					at 5 bar [m ³ /h]	Female thread			Slip-on connection		
		3/4 BSPP		EPDM FKM				2.0	3.0	5.0	10.0	L		$\varnothing D_1$	$\varnothing D_2$	L	$\varnothing D_1$	$\varnothing D_2$	
		EPDM	FKM	EPDM	FKM														
360°	5T2.849.1Y	AL	22	TF07	31	1.75	4 x 1.75	13	15	20	28	1,2	142	68	82	157	77	82	11.5
	5T2.969.1Y	AL	22	TF07	31	2.70	4 x 2.70	25	31	40	57	2,4	142	68	82	157	77	82	12.0
	5T3.029.1Y	AL	22	TF07	31	3.20	4 x 3.20	35	43	55	78	3,3	142	68	82	157	77	82	12.5
	5T3.089.1Y	AL	22	TF07	31	4.00	4 x 4.00	50	61	79	112	4,7	148	74	91	163	82	91	13.0

Information on operation

Compressed air can be used only for a short time for blowing dry. Use above the recommended pressure will have a negative effect on the cleaning result and wear.

Ordering example with FDA and (EC) 1935/2004 conformity.

All materials are suitable for contact with food.



Type + Connection = Ordering no.
5T2.849.1Y + AL = 5T2.849.1Y.AL

Ordering example with ATEX approval. FDA and (EC) 1935/2004 conformity.

Unit group/Category/Zones:

- II 1G Ex h IIB T6...T3 Ga
- II 1D Ex h IIIC T85 °C...T190 °C Da



Important

The code for the connection changes for the ATEX version with slip-on connection.

Ordering example for 3/4" slip-on connection: 5T2.849.1Y.T2.EX



Type + Connection + ATEX = Ordering no.
5T2.849.1Y + AL + EX = 5T2.849.1Y.AL.EX